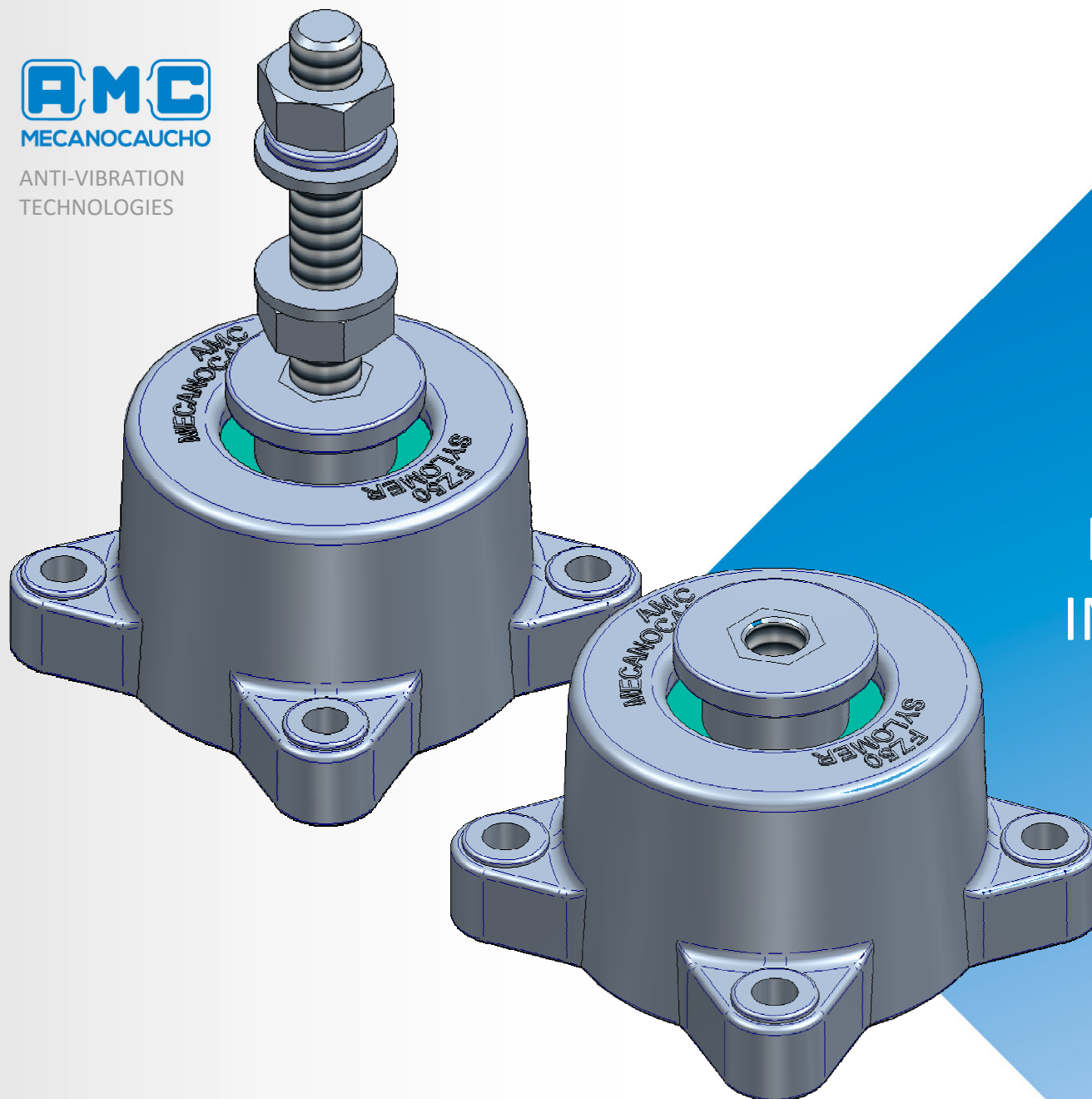




ANTI-VIBRATION
TECHNOLOGIES



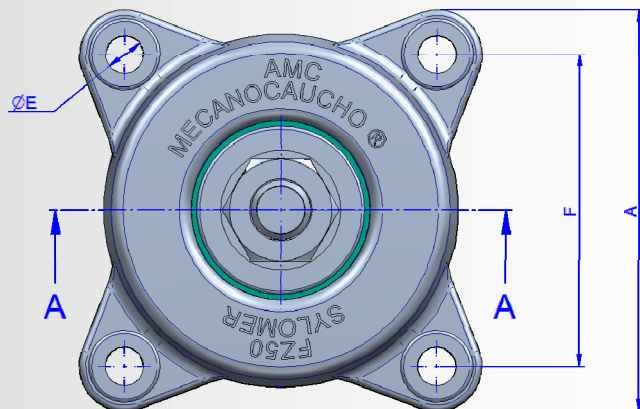
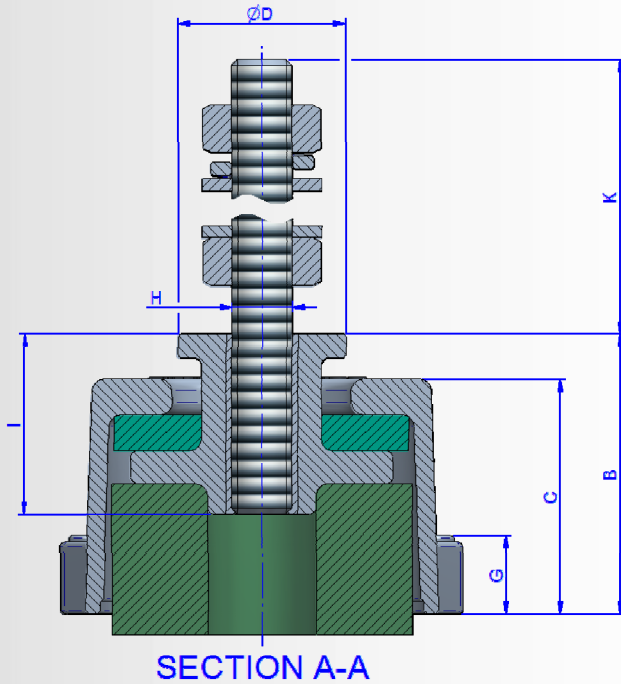
INSTALLATION INSTRUCTIONS

FZ SYLOMER®

INSTALLATION INSTRUCTIONS

FZ SYLOMER®

FZ SYLOMER® + KIT

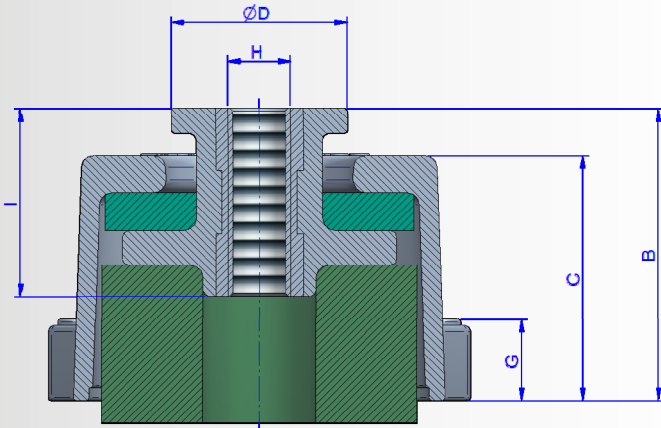


Code	Description	A	B	C	D	E	F	G	H	I	K	Max. Load (kg)
176293	FZ-50-27-M10+KIT	67	46,5	39	28	6.5	52	13	M10	26	60	15
176295	FZ-50-33-M10+KIT	67	46,5	39	28	6.5	52	13	M10	26	60	25
176297	FZ-50-39-M10+KIT	67	46,5	39	28	6.5	52	13	M10	26	60	45
176281	FZ-50-45-M10+KIT	67	46,5	39	28	6.5	52	13	M10	26	60	50
176291	FZ-50-51-M10+KIT	67	46,5	39	28	6.5	52	13	M10	26	60	100
176299	FZ-100-45-M12+KIT	80	56	48	25	6.5	67	13	M12	40	60	150
176301	FZ-100-51-M12+KIT	80	56	48	25	6,5	67	13	M12	40	60	200
176311	FZ-200-51-M12+KIT	108	72	55	40	8,5	90	15	M12	25	60	280
176321	FZ-200-57-M12+KIT	108	72	55	40	8,5	90	15	M12	25	60	400
176323	FZ-200-57-M14+KIT	108	72	55	40	8,5	90	15	M14	25	60	400
176331	FZ-400-51-M14+KIT	155	95	80	65	12,5	125	22	M14	28	60	800
176341	FZ-400-57-M16+KIT	155	95	80	65	12,5	125	22	M16	28	60	1000
176351	FZ-600-51-M18+KIT	175	94	80	65	14	140	23	M18	28	60	1200
176361	FZ-600-57-M20+KIT	175	94	80	65	14	140	23	M20	28	60	1500
176371	FZ-1000-57-M20+KIT	205	95	80	65	16	162	28	M20	28	60	2000

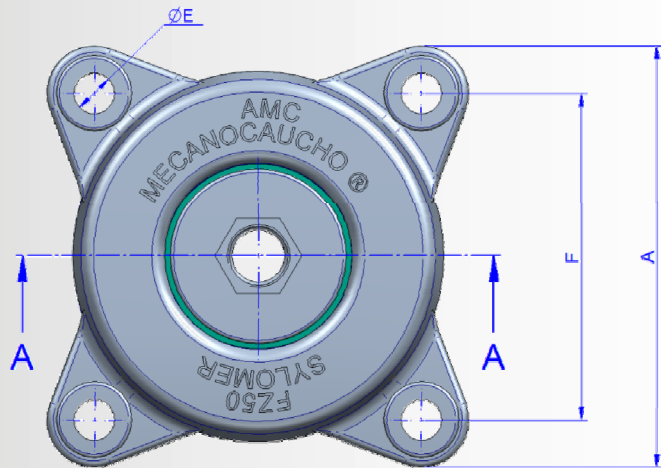
INSTALLATION INSTRUCTIONS

FZ SYLOMER®

FZ SYLOMER® WITHOUT KIT



SECTION A-A



Code	Description	A	B	C	D	E	F	G	H	I	K	Max. Load (kg)
176293	FZ-50-27-M10	67	46.5	39	28	6.5	52	13	M10	26	-	15
176295	FZ-50-33-M10	67	46.5	39	28	6.5	52	13	M10	26	-	25
176297	FZ-50-39-M10	67	46.5	39	28	6.5	52	13	M10	26	-	45
176281	FZ-50-45-M10	67	46.5	39	28	6.5	52	13	M10	26	-	50
176291	FZ-50-51-M10	67	46.5	39	28	6.5	52	13	M10	26	-	100
176299	FZ-100-45-M12	80	56	48	25	6.5	67	13	M12	40	-	150
176301	FZ-100-51-M12	80	56	48	25	6,5	67	13	M12	40	-	200
176311	FZ-200-51-M12	108	72	55	40	8,5	90	15	M12	25	-	280
176321	FZ-200-57-M12	108	72	55	40	8,5	90	15	M12	25	-	400
176323	FZ-200-57-M14	108	72	55	40	8,5	90	15	M14	25	-	400
176331	FZ-400-51-M14	155	95	80	65	12,5	125	22	M14	28	-	800
176341	FZ-400-57-M16	155	95	80	65	12,5	125	22	M16	28	-	1000
176351	FZ-600-51-M18	175	94	80	65	14	140	23	M18	28	-	1200
176361	FZ-600-57-M20	175	94	80	65	14	140	23	M20	28	-	1500
176371	FZ-1000-57-M20	205	95	80	65	16	162	28	M20	28	-	2000

Installation instructions:

- FZ Sylomer® with leveling kit

- Remove the leveling kit, elevate the equipment and fix the leveling stud bolts to it with the provided nuts and washers.
- Hang the mounts from the stud bolts, assuring that bases of the mounts are at a proper level.
- Coordinate the location of each mount, depending on the installation drawing or the positions recommended in the theoretical calculations.
- Lower the equipment until the mounts withstand the load of the equipment, taking care not to overload any mount.
- Do not attempt to move the isolators laterally with the weight of the equipment on them, in order to avoid any bend or brake of the mount. If it is necessary to move the equipment, remove the weight from the isolators by raising the equipment before moving.
- Fix the mounts to the ground using the four bottom fixation holes.

- FZ Sylomer® without leveling kit

- Elevate the equipment and place the mounts under the equipment.
- Coordinate the location of each mount, depending on the installation drawing or the positions recommended in the theoretical calculations.
- Introduce stud bolts to fasten the equipment to the mounts.
- Lower the equipment and support it on the FZ Sylomer® mounts, taking care not to overload any mount. The weight of the suspended equipment must be placed directly on the top face of the internal bushing.
- When the equipment is completely installed and operating, fix it to the mounts tightening the locking nuts.
- Do not attempt to move the isolators laterally with the weight of the equipment on them, in order to avoid any bend or brake of the mount. If it is necessary to move the equipment, remove the weight from the isolators by raising the equipment before moving.
- Fix the mounts to the ground using the four bottom fixation holes.



Industrialdea 167 35A E-20159
ASTEASU (Gipuzkoa) Spain
Tel.: +34 943 69 61 02
Fax: +34 943 69 62 19
e-mail: sales@amcsa.es
www.mecanocaucho.com
www.akustik.com